

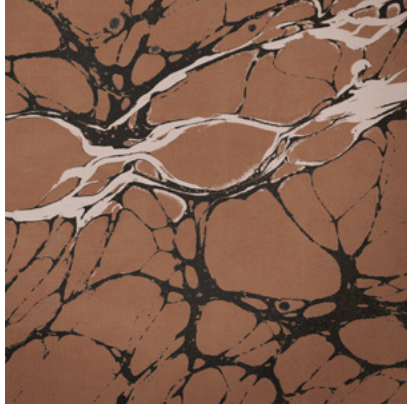
Calico

NIGHT

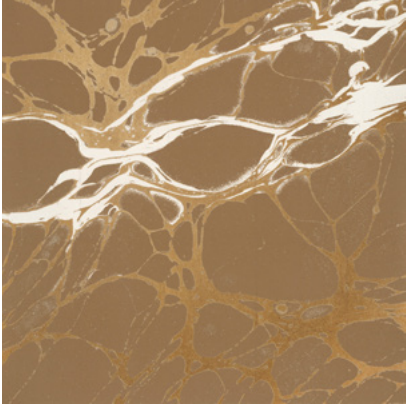
Tear Sheet



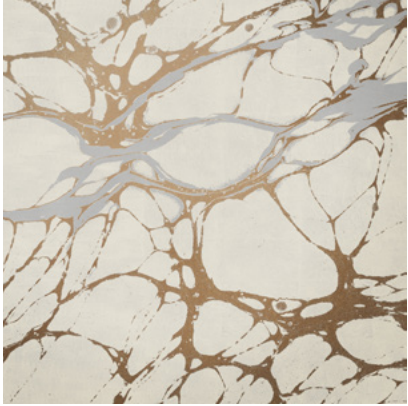
Night is an exploration of the duality of darkness and light.



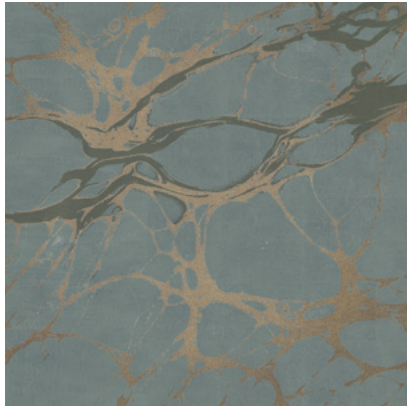
BRICK



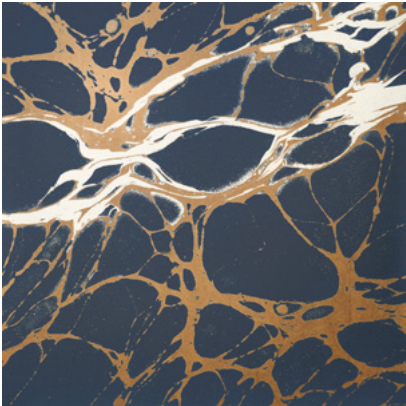
COPPER



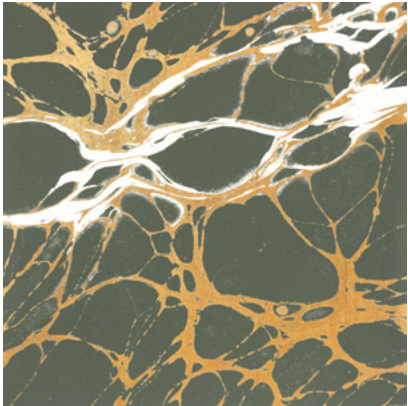
ECRU



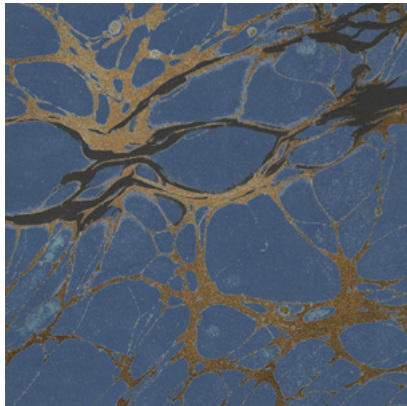
GLAZE



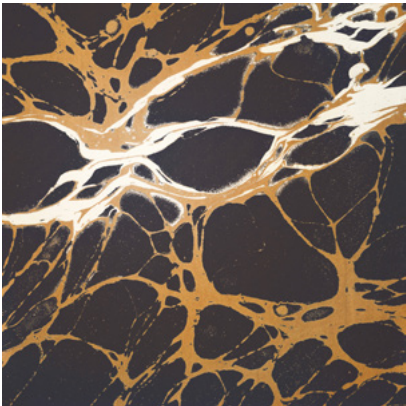
INDIGO



PERIDOT



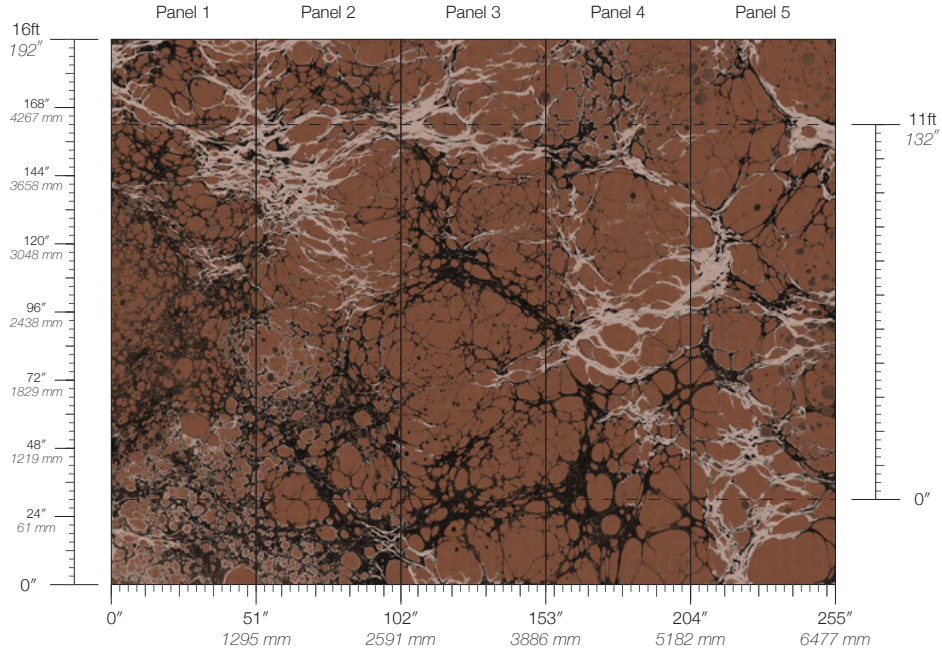
ROYAL



SLATE

Night Glaze

Suitable for residential and commercial projects



COLOR
Glaze

STOCK
Made to order

REPEAT
Non-repeating

CONTACT
sales@calicowallpaper.com
+1 718 243 1705
57 Lispenard Street
New York, NY 10013 USA

ITEM
1611

MINIMUM
1 panel

LEAD TIME
4 weeks to print

CONTENT
Type II Vinyl

MAINTENANCE
Water-based cleanser

ORIGIN
USA

DISCLAIMER
Panel maps represent mural artwork only. Reference the physical sample for color and texture.

PANEL WIDTH
51" / 1295 mm trimmed

FLAMMABILITY
ASTM E84 Adhered Class A

DETAILS
Custom options available

PANEL HEIGHT
132" / 3353 mm standard
192" / 4877 mm extended

ENVIRONMENTAL
Recycled Content, Phthalate Free
Low VOC, HPD Available

PRICE
Available upon request